

Flobo System Repair Lite User guide

by Flobo Recovery



www.flobo-recovery.biz

Data Recovery as Art!

January 2011

Legal Notices

Disclaimer

The information contained in this publication is subject to change without notice. Flobo Recovery makes no warranty of any kind with regard to this manual, including, but not limited to, the implied warranties of merchantability and fitness for a particular purpose. Flobo Recovery shall not be liable for errors contained herein or for incidental or consequential damages in connection with the furnishing, performance, or use of this manual.

Table of contents

Introducing Flobo System Repair.....	1
Flobo System Repair Operation.....	4
Flobo Hard Disk Repair Operation.....	11
FAQ Flobo System Repair	25
FAQ Flobo Hard Disk Repair	27
License Agreement.....	33

1. Introducing Flobo System Repair

Flobo System Repair is a program designed to repair and tune-up Microsoft Windows Xp operating systems.

When the Microsoft Windows operating systems are slow and sluggish, programs take ages to open you are thinking to reinstall, to format partitions, or maybe you think you need to buy a new PC?

The answer is a BIG NO! You can maintain your operating system using Flobo System Repair Lite.

In order to understand the way Flobo System Repair works you need to understand what the MS Windows XP slow operation main causes are.

1) Malware

One of the most often causes for system slowing and faulty operation is the malware. Malware stands for malicious (or malfunctioning) software which is software designed to perform a variety of forms of hostile, intrusive, or annoying actions. There are different types of malware: viruses, rootkit, trojans, worms, adware. The differences between different types of malware are the achievement of the hostile action and the way of spreading. However, you may find that generic malware are named “virus” though technically is incorrect.

2) Startup programs

There are certain things that happen every time a computer boots. Several stages are completed: 1) system devices are initialized, current user settings are loaded, and some user-installed programs will start automatically when Windows boots.

Pop-up advertisements and different types of malware can also be executed at startup without the users to know. The most important cause of a slow startup is having too many programs configured to run automatically when Windows boots. If too many programs are configured to run at startup, it can decrease system performance, but also can cause faulty operation.

3) Hard Disk fragmentation

Fragmentation is effect of how file systems work and data is stored. Ideally, all the data for a specific file should be stored contiguously. In this case, the hard disk drive, which is accessing data by moving a mechanic arm (to a certain position), is moving to access data in the some region. But very often, when some files are deleted and others are copied on the disk drive, the new data copied can't be stored in the contiguous region, so it is placed in different regions on the drive. Data from one file is stored in different area of hard disk and the arm need to reposition several times to access data and consequently more time is needed for completing this task. Therefore it is advised to start defragmentation utilities such as Windows Disk Defragmenter every month. You can access this utility by pressing “Ms Windows Utility” and select “Disk Defragmenter”

4) Registry fragmentation

Registry files are used by MS Windows operating systems and programs to store data. Windows operating system and programs installed on access registry files even hundred times every second. Therefore, if your registry is fragmented and slow in responding to requests for information, it affects the performance of your PC and slows it down.

5) Temporary files

Your computer is storing temporary files when you're looking at WebPages and even when you're working on files in programs. Over time, these files will slow your computer's performance. Nevertheless, your system drive (usually C drive) is getting lower disk space, which can be dangerous and could lead to the situation that the system cannot boot up. The deleting of the temporary files is mandatory and need to be performed cyclic.

6) Registry settings

Registry entries in the registry are some times modified by malware software or removed causing problems in performance or failures like system errors. Due to the adding and removing of hardware and/or software to the system the registry increases in size and it takes more time for Windows to read the registry. Flobo System Repair performs a diagnostic for the current operating system and modifies some of the registry values according to your configuration and those modified by malware are restored to the correct values.

7) Devices not installed properly or not installed

If not your PC devices drivers are no installed the user cannot use, or use it with low capabilities the hardware.

In case you find uninstalled software you should install drivers. These drivers are delivered with the computer. You could also search computer manufacturer support web page for drivers.

8) Hard Disk drive bad sectors

Hard Disk bad sector is leading to malfunctioning of the computer. For more information see Flobo Hard Disk User manual

2. Flobo System Repair Operation

Prerequisite

In order to perform Microsoft Windows repair you need to execute Automatic Repair. It is advised to execute Automatic Repair in safe mode.

Safe mode is a diagnostic mode of a computer operating system and to begin entering Windows XP Safe Mode, turn your PC on or restart it.

Just before the Windows XP splash screen shown above appears press several times the **F8** key to enter the *Windows Advanced Options Menu*. In the menu select Safe mode as shown in the figure bellow. The operating system will start in operating system. Do not be concern that the resolution is low, as this is normal behavior.

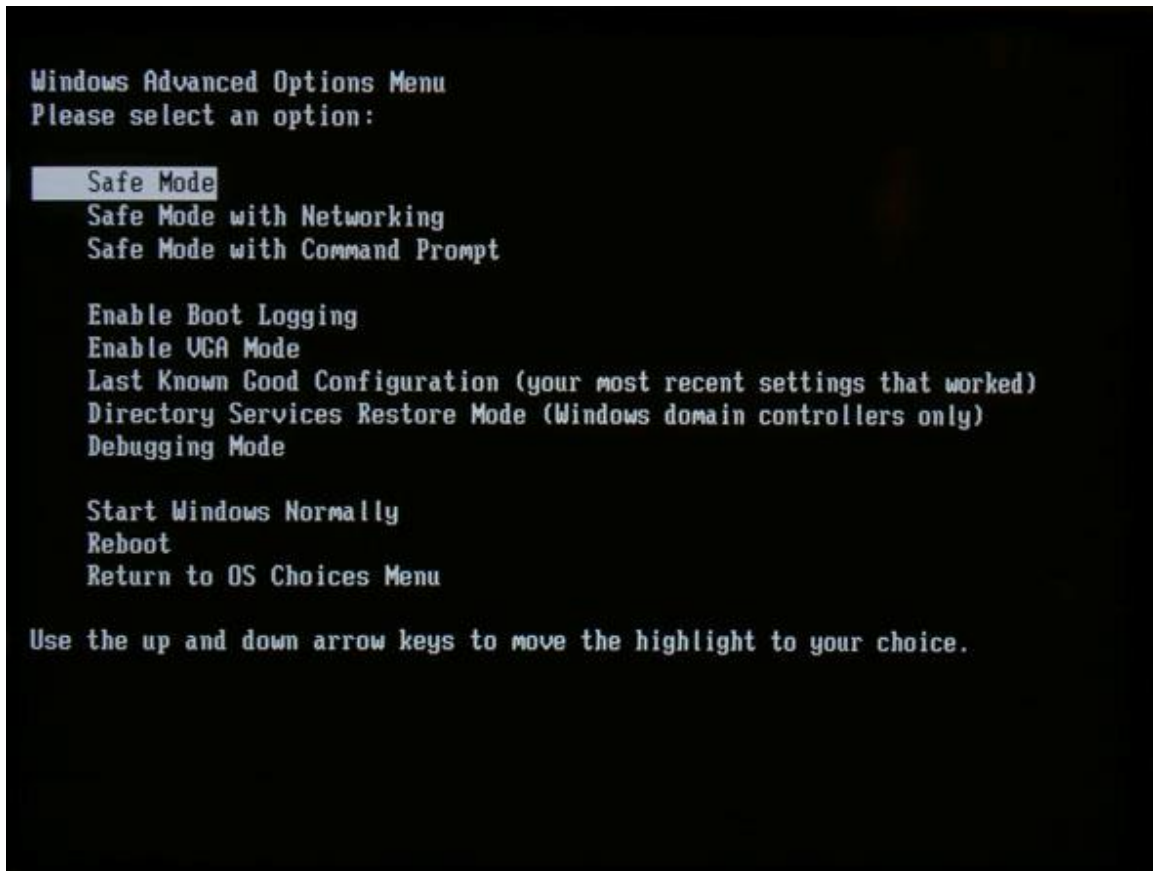


Fig.1 Safe mode menu in MS Windows XP operating system

Main Interface

The main interface, as depicted in figure 2, allows you to start several utilities in Flobo System Repair.

The utilities included in FSR are: Automatic Repair, User Advisor, Hard Disk Repair, Startup manager, Uninstaller, File Remover. The interface let you also execute some of the Microsoft utilities.



Fig. 2 Flobo System Repair main interface

Flobo Automatic Repair

This utility let you repair and tune up by one click. Simple press Normal Repair button (see figure 3) and the program will repair and improve your system performances. Though is not mandatory, it is advised to execute Automatic repair in safe mode. In case of damaged system than you should use Ultimate Repair button.

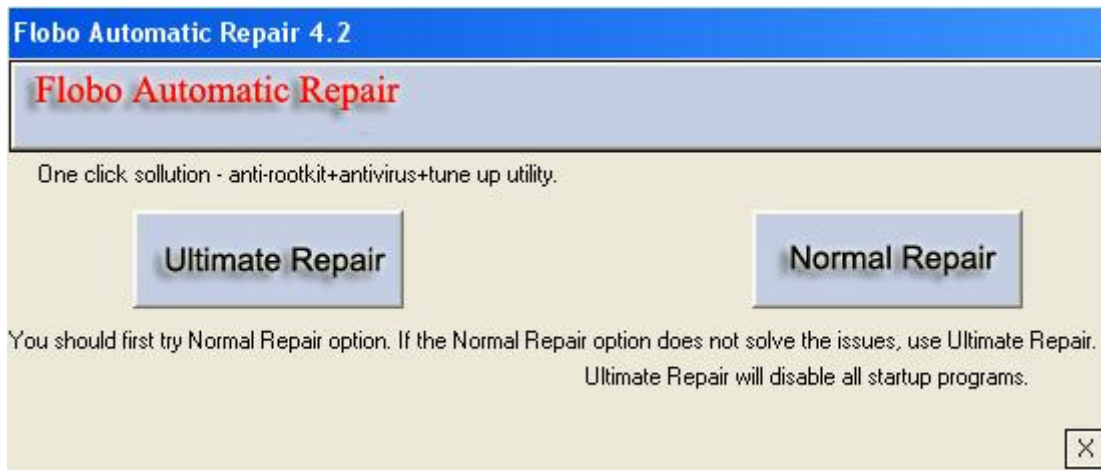


Fig.3 Flobo Automatic Repair interface

User Advisor

Flobo User Advisor is a utility to find several issues concerning misuse or, maintenance. **This utility** cannot correct the problems; the user is advised only to take certain actions. In some cases you should execute some of the Flobo System Repair utilities.

There are several criteria for system improvement.

- 1) Antivirus protection: You are advised to install an antivirus if you have no antivirus installed. However, you might have an antivirus that is not in the software antivirus list.

- 2) Firewall protection: You are advised to install a firewall if there is no firewall installed. However, you might have a firewall that is not in the FSR firewall list.

- 3) System Free Space System free space is very important for system reliability. In case there is too less free space you might encounter system freeze, blue screen restart, etc.

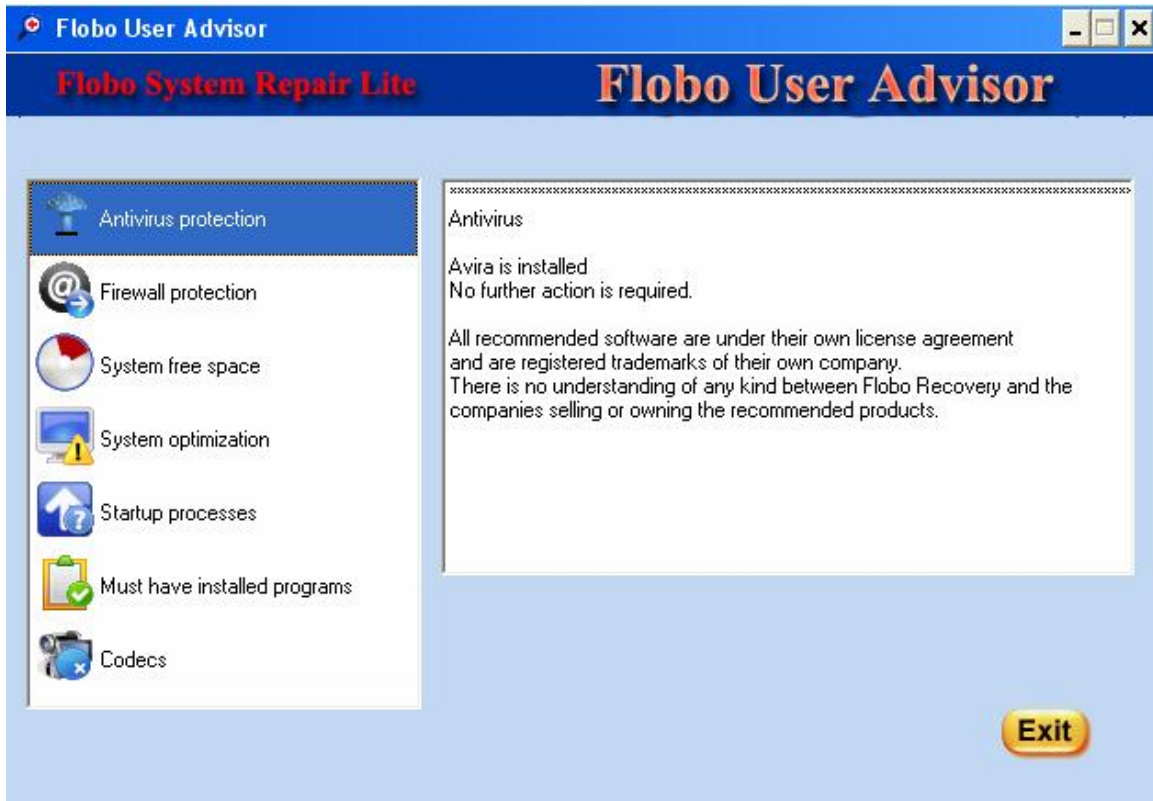


Fig. 4 Flobo User Advisor interface

4) System optimization

There are several criterions in system optimization:

a) Number of processes running

The number of processes running after startup is an important as you might have many programs starting at boot up slowing down your computer. Unfortunately a lot of software producers are setting many programs to start though these programs are not used in the functionality of their main software.

It is advised to have maximum 40 processes running after system boot up. If you have not stopped other application before starting Flobo Automatic Repair then you should not consider the advice.

b) Devices installed

Sometimes it happens that you haven't installed all devices, such as sound board, video board, etc and than you cannot use or use the hardware installed with low capabilities.

Your should install drivers in case there are uninstalled software. These drivers are delivered with the computer. You could also search computer hardware manufacturer support web page for drivers.

c) Actual CPU load

CPU Load is an important clue for computer virus infection or malfunction. After boot up, the CPU load should be insignificant. If you have not stop all application before starting Flobo Automatic Repair or another Flobo System Repair utility is running than you may ignore this information.

d) Swap size

Paging file for virtual memory called pagefile.sys is important for system reliability. If case there is not enough paging file size the system will not run properly, especially when running applications that use large areas of RAM.

e) Last time you run Flobo Automatic Repair.

It is advised to run every month Flobo Automatic Repair.

5) Startup processes are the programs that are starting at bootup. In case there are many startup processes you are advices to disable some of the programs using Flobo Startup Manager.

6) Must have installed programs

You are advised to install several applications. These applications are web browsers, document reader, or video players.

However, these applications are not important so far that concern system reliability or repair issue.

All recommended software are under their own license agreement and are registered trademarks of their own company. There is no understanding of any kind between Flobo Recovery and the companies selling or owning the recommended products.

7) Codecs

Codecs are software that allows playing movie files. You are advised to install different codec in case is detected you have no codec installed.

Flobo Hard Disk Repair operation

Step 1. In the hard drives list you can find your installed hard disk drives. First step is to select the hard disk to be scanned as depicted bellow.

The screenshot shows the Flobo Hard Disk Repair 4.1 software interface. The main window is titled "Flobo Hard Disk Repair". On the left, there is a table of SMART attributes. Below the table, there is a text box explaining the S.M.A.R.T. details. On the right, there is a list of hard drives, with "Drive 1 ST3500830Q4S" selected. Below the drive list, there are input fields for "Start sector", "End Sector", and "Capacity (MB)". At the bottom, there are several status indicators: "Open session", "Scan", "Temperature" (36 °C / 96 °F), "Status" (Bad), "Time counter" (1953 hours), and an "Exit" button.

AttrId	Name	Current ...	Value
001	Read Error Rate	37568	99
003	Spin-Up Time	0	92
004	Start/Stop Count	279	100
005	Reallocated Sectors...	0	100
007	Seek Error Rate	39332	60
009	Power-On Hours	1953	98
010	Spin Retry Count	0	100
012	Power Cycle Count	410	100
187	Reported Uncorrect...	0	100

The S.M.A.R.T. details for the selected hard disk is displayed above. Press on each smart attribute to see more information. In order to repair hard disk select one in the list and press Scan

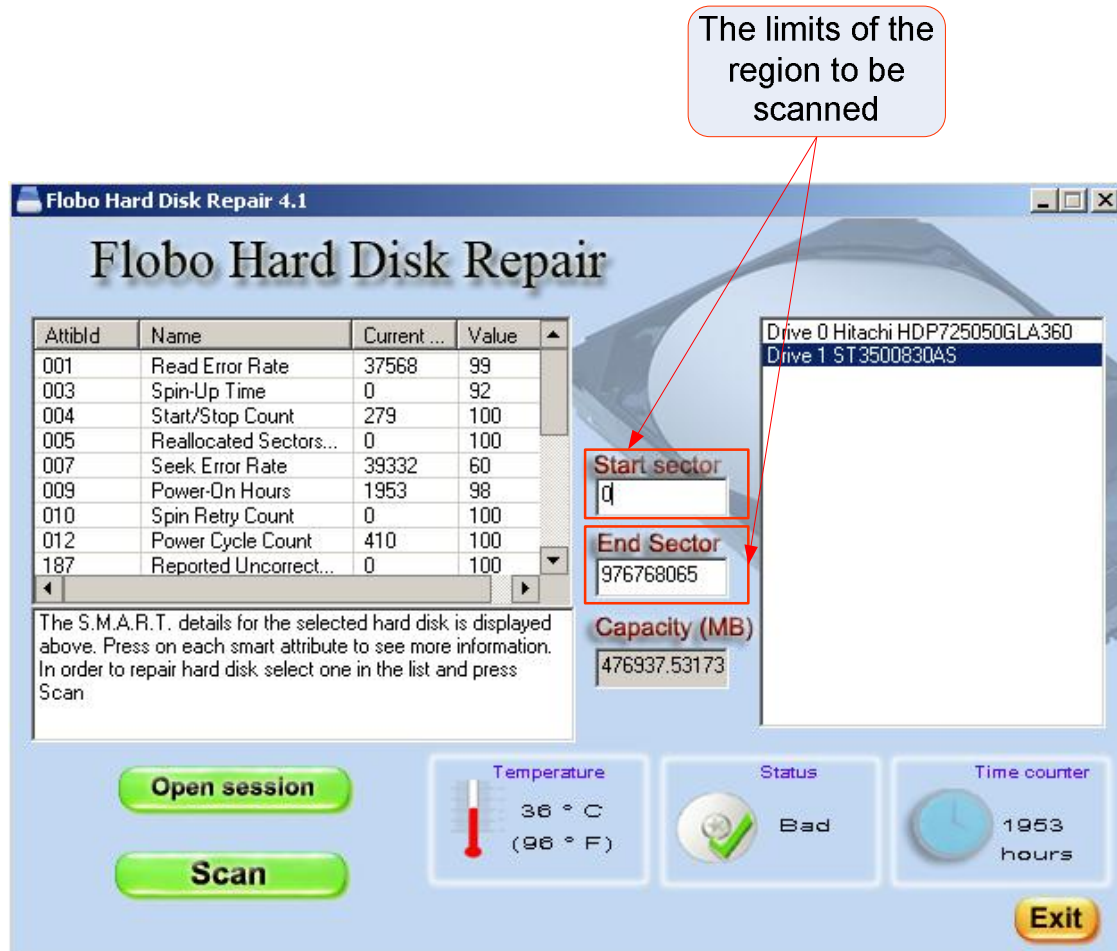
Drive 0 Hitachi HDP725050GLA360
Drive 1 ST3500830Q4S

Start sector: 0
End Sector: 976768065
Capacity (MB): 476937.53173

Temperature: 36 °C (96 °F)
Status: Bad
Time counter: 1953 hours

Buttons: Open session, Scan, Exit

Step 2. In case you want to scan a particular region of the hard disk you are able to modify the value in the start sector and end sector text boxes. If you want to scan entire hard disk surface than you should let the default values.





Note

After selecting a disk drive, the temperature, the status calculated using S.M.A.R.T. details and timer counter (the power-in state hours) are displayed.

The screenshot shows the Flobo Hard Disk Repair 4.1 application window. It features a table of S.M.A.R.T. attributes, drive selection options, and three status indicators: Temperature, Status, and Time counter. The Temperature indicator shows 36 °C (96 °F). The Status indicator shows 'Bad' with a green checkmark icon. The Time counter shows 1953 hours. There are also buttons for 'Open session', 'Scan', and 'Exit'.

AttrId	Name	Current ...	Value
001	Read Error Rate	37568	99
003	Spin-Up Time	0	92
004	Start/Stop Count	279	100
005	Reallocated Sectors...	0	100
007	Seek Error Rate	39332	60
009	Power-On Hours	1953	98
010	Spin Retry Count	0	100
012	Power Cycle Count	410	100
187	Reported Uncorrect...	0	100

Drive 0 Hitachi HDP725050GLA360
Drive 1 ST3500830AS

Start sector:
End Sector:
Capacity (MB):

Temperature: 36 ° C (96 ° F)
Status: Bad
Time counter: 1953 hours

Buttons: Open session, Scan, Exit

Drive temperature

Hard Disk status using S.M.A.R.T. information

Power-on-time

Step 3. After selecting the hard disk to be scanned press scan.



Scan button



In case your hard disk S.M.A.R.T. information indicates bad health status you will be informed after pressing Scan button. You should backup data on this drive in this circumstance.

AttrId	Name	Current ...	Value
001	Read Error Rate	37568	99
003	Spin-Up Time	0	92
004	Start/Stop Count	279	100
005	Reallocated Sectors...	0	100
007	Seek Error Rate	39332	60

Drive 0 Hitachi HDP725050GLA360
Drive 1 ST3500830AS

Flobo Hard Disk Repair

You should Backup you data IMMEDIATELY from hard disk: ST3500830AS! Smart attributes show wrong value!

OK

476937.53173

Open session

Scan

Temperature: 36 ° C (96 ° F)

Status: Bad

Time counter: 1953 hours

Exit

Step 4. You will be asked if you want to perform a scan & repair operation or to perform regeneration of entire hard disk surface. The scan and repair operation is faster, but is not able all the time to repair instable sector while generate all surface allows regeneration of all hard disk surface.





In case you want to stop the current scanning process, you should press stop button.

6 % processed sector number: 56506900 Elapsed: 1 min 8 hrs Remaining: 33 min 130 hrs

Flobo Hard Disk Repair

Attrblid	Name	Current ...	Value
001	Read Error Rate	37568	99
003	Spin-Up Time	0	92
004	Start/Stop Count	271	100
005	Reallocated Sectors...	0	100
007	Seek Error Rate	28479	60
009	Power-On Hours	1857	98
010	Spin Retry Count	0	100
012	Power Cycle Count	402	100
187	Reported Uncorrect...	0	100

The S.M.A.R.T. details for the selected hard disk is displayed above. Press on each smart attribute to see more information. In order to repair hard disk select one in the list and press Scan

Drive 0 Hitachi HDP725050GLA360
Drive 1 ST3500830AS

Start sector
0

End Sector
976768065

Capacity (MB)
476937.53173

Stop

Temperature: 36 ° C (96 ° F)

Status: Bad

Time counter: 1857 hours

Exit



You will be asked to confirm if you want to stop the process.

AttrId	Name	Current ...	Value
001	Read Error Rate	37568	99
003	Spin-Up Time	0	92
004	Start/Stop Count	279	100
005	Reallocated Sectors...	0	100
007	Seek Error Rate	39332	60
009	Power-On Hours		
010	Spin Retry Count		
012	Power Cycle Count		
187	Reported Uncorre...		

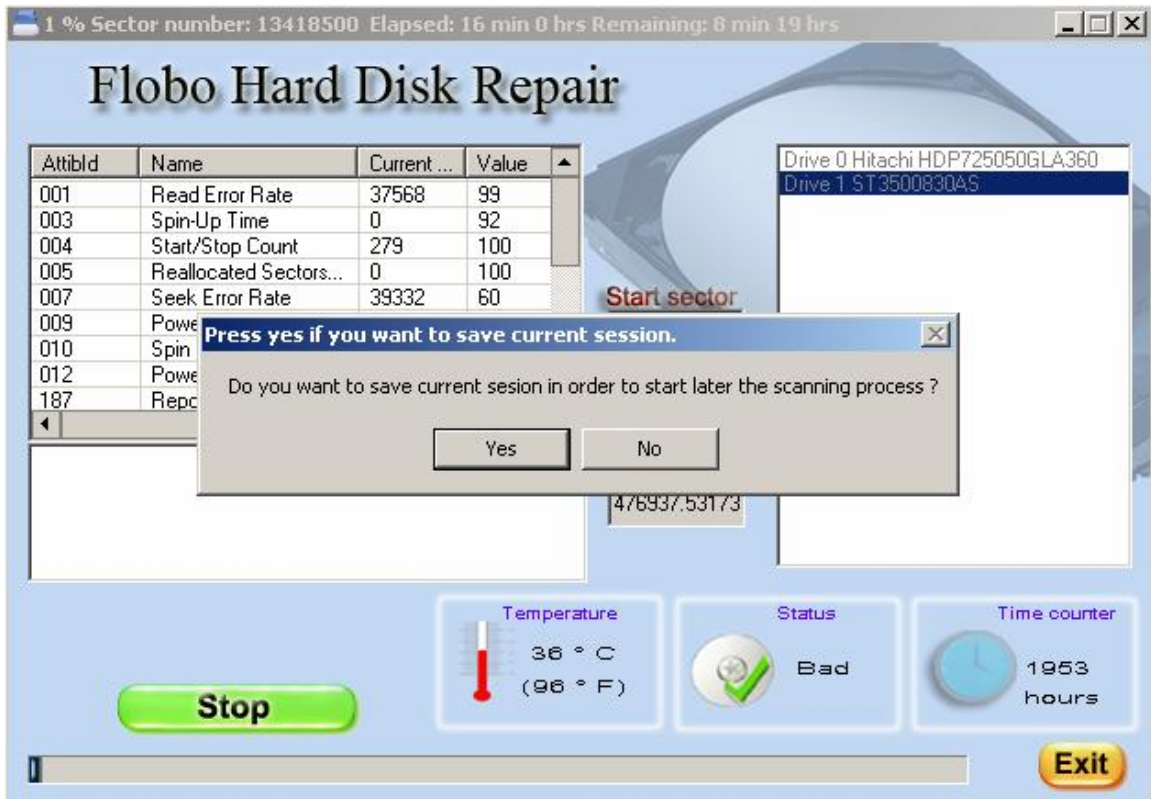
Drive 0 Hitachi HDP725050GLA360
Drive 1 ST3500830AS

Temperature: 36 ° C (96 ° F)
Status: Bad
Time counter: 1953 hours

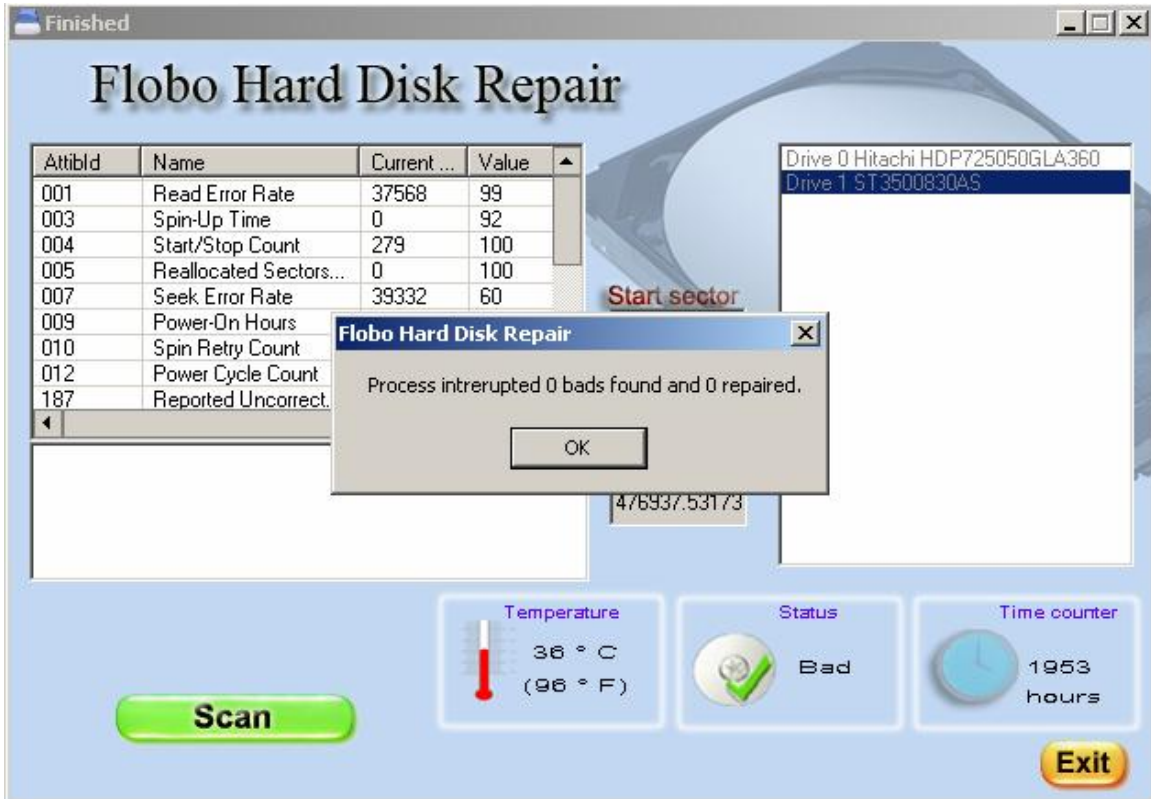


Also you will be asked if you want to save session, in order to re-start later the process from the current state.

If you want to save the current session press yes.



Step 6. After entire hard disk surface is scanned it is displayed the results of the scanning.





Open session button allows selecting a previously selected session.

AttrId	Name	Current ...	Value
001	Read Error Rate	37568	99
003	Spin-Up Time	0	92
004	Start/Stop Count	279	100
005	Reallocated Sectors...	0	100
007	Seek Error Rate	39332	60
009	Power-On Hours	1953	98
010	Spin Retry Count	0	100
012	Power Cycle Count	410	100
187	Reported Uncorrect...	0	100

Drive 0 Hitachi HDP725050GLA360
Drive 1 ST3500830AS

Start sector: 0
End Sector: 976768065
Capacity (MB): 476937.53173

Temperature: 36 °C (96 °F)
Status: Bad
Time counter: 1953 hours

Buttons: Open session, Scan, Exit

Open session button

Flobo Startup Manager

WARNING

UNAPPROPRIATE use of this utility might lead to non – execution of some applications. Please read the disclaimer in the license.

This program allows you to control what programs run at system startup the number of programs starting at bootup are very important and is affecting your system performance. Also, malware are loading at bootup. Sometimes you might identify yourself a virus as suspicious name (for instance strange names using only consonants – rtgfs.exe) or suspicious path.

Disable Item button allow you to disable startup items. The item disable will appear in the “Disabled startup items”.

Delete Item button will delete the item from startup. These settings cannot be reversed once you pressed **Delete Item** button.

Delete Item and File button will delete both the item from startup but also the file on hard disk drive. You should use this option when you know that the program is a malware or undesirable program. These settings cannot be reversed once you pressed **Delete Item and File** button.

Open Item Folder button will open the folder where the file is located.



Fig. 5 Flobo Uninstaller screenshot

Flobo File Remover

This utility allows you to delete files that cannot be delete using your shell program. However, in some cases of corruption or virus, the Flobo File Remover might fail to remove files or folders.

Select File and Select Folder buttons allows you to select the file or folder to remove



Fig. 6 Flobo File Remover screenshot

Flobo System Repair

Frequently asked questions

1. This program guarantees my MS Windows operating system repair?

No. Depends on different degree of corruption, this utility might repair your operating system

2. My MS Windows operating system is not booting at all. These utilities will repair my PC?

No, in case your MS Windows is not booting at all, this program will not perform any repair, as you need to execute in the operating system.

3. What antivirus I should install?

There is no perfect antivirus solution. You should install one antivirus at a time, scan all your partition, uninstall current antivirus, install another antivirus and so on. Maybe after you scan with 2-3 anti-viruses than your system is clean.

4. Flobo System Repair provides antivirus scanning. Should I install another antivirus?

Flobo System Repair is a scanning solution for malware (antiviruses, rootkit, Trojans, etc) but is not an antivirus monitor (a watchdog for all your system activities). You should definitely install an antivirus solution.

5. I scanned with Automatic Repair, I do not need to scan with another antivirus?

There is no perfect or absolute solution for antivirus. See No. 3.

6. I deleted one program from startup and now I cannot start the main application? What should I do?

Reinstalling the program will fix the program.

Flobo Hard Disk Repair

Frequently asked questions

1. This program deletes or overwrites all the data on the hard drive?

No, the program does not delete, or rewrite data on the hard drive. The data will remain on the disk.

2. The program deletes partition?

No, the program does not delete partition.

3. The program is able to regenerate partitions that are not recognized by windows?

Yes, as previously stated, the program is accessing the hard at low level communication and is not concerning the way the data is managed on hard disk drive.

4. The program is able to regenerate IDE or SCSI or SATA hard disks?

The software is able to handle all disk interfaces.

5 The program is able to repair hard disk that cannot be recognized by BIOS?

No, in this case the software is not able to repair the hard disk.

6. The program is able to repair the hard disk if there is a mechanical problem?

No, in this case the software is not able to repair the hard disk.

7. The program is able to repair all bad sectors ?

No, in case of physical bad sectors done for instance by shock, the program is not able to repair the surface.

8. How much last the standard scan ?

Bellow you can find approximate figures for different hard disk drives capacities:

500 G	19 hours
250 G	10 hours

9. How much last the “regenerate all surface” procedure?

Bellow you can find approximate figures for different hard disk drives capacities:

500 G130 hours
250 G70 hours

10. Am I able to restart the scanning process from the current sector?

Yes, you must press yes when asked to save the session and next time you want to re-start the process select open session and select the previously saved file.

11. Can I scan the current hard disk drive from the some hard disk drive where the operating system is running?

Yes, you can do that, but you will notice a slow responsiveness of the operating system.

12. My scan is showing 20 hours, though initially it was displayed 12 hours, what happened?

In case of encountering bad sectors the scanning will last longer.

13. The program is “freezing” time to time. What is happening?

The program is trying to repair the bad sectors and the hard disk is responding with huge delay. After repairing or bypassing the bad sectors you will be able to access the interface.

14. I am listening music while scanning the hard disk. Time to time the music is interrupted. What is happening?

The program is accessing bad sectors and the operating system encounters time delay in executing programs.

15. I am scanning the some hard disk where MS Windows is running. At a certain time all operating system freezes. What is the problem?

It seems that some of the files of the operating system are placed on hard disk region with bad sectors. Because of the supplementary hard disk accessing of the software, the operating system is not able to handle that delay/error and it freezes or even restart. We recommend scanning the hard disk as a slave, running windows on another hard disk drive.

16. The program is warning me that the hard disk temperature is too high. Is something wrong to use it? – Though is working without problem?

The long term using of a hard disk in temperature above 50 Celsius will lead to failure (because of the mechanical parts that are affected by the temperature). We do recommend a running temperature of about 35 Celsius degrees. In case of high temperature you need to install a supplementary fan on your case, or even check if not some of the fans failed.

17. Your program is displaying two hard disks while in windows explorer I cannot see another partition from the second hard drive. The second hard disk is failed?

No, the hard disk is not failed, if you are not bale to see any partition in windows explorer means that there is unpartitioned space, non-windows partition or corrupt partitions on the mentioned hard disk.

18. Is this program able to recover data on hard disk?

No, this program is not data recovery software. However helps recover data because repairs bad sector and other file – recovery software will be able to access data.

19 My hard drive is not spinning (I can feel by touch it that there is no vibrations). Is this software able to repair it?

No. See 6.

20. My computer is restarting continuously. Is this caused by the bad sectors on hard drive?

One of the cause of restraint operating system is that the operating system is trying to access its own files that are corrupt because are located in a bad sector region on hard disk. However, the causes for restating computer are multiple. You first check if the power source is not faulty, or the memory is not dirty. Also the fluctuation of power

might lead to the continuous restarting (by using a UPC – uninterruptible power source – you can solve the problem).

21. Is this program able to repair memory stick or SSD hard disk drives?

No, is not.

22. Some of my hard disk drive has different S.M.A.R.T. details than the other. Is something wrong?

No, each hard disk drive manufacturer and model might have different **S.M.A.R.T.** attributes.

23. My hard disk drive has 2000 hours of power-in –time, is that much, do I need to replace it?

Though the MTBF (Mean Time Before Failure) of a hard disk drive as provided by manufacturer is about 1 mil hours, this is a huge limit. 40 000 hours is usually a limit for a user to change the hard disk drive.

24. The software indicates that I should backup data and replace hard disk as the S.M.A.R.T. details indicates faulty parameter. However the hard disk drives works without any problem. What is the problem?

The S.M.A.R.T. details indicates wrong value and that means that on long term the hard disk will likely to fall. You should backup data on the hard disk.

25. Can I work on the some computer while the program is scanning the hard disk?

Yes, there is no problem working in the some when scanning a hard disk drive. However see 15

26. If for instance the program repairs, let's say 3 sectors, the data on these sectors will be recovered?

No, the data on the repaired sectors might not be recovered.

27. I found on the internet some solutions to repair the hard disk drive such as: hit the drive , put it in refrigerator, etc. These are correct?

Never do that. In case you are not able to access data because the hard disk is not "seen" by BIOS you should contact a professional data recovery.

28. I noticed that the remaining time is not correct. What is wrong?

The remaining time is an estimated time, several issues, such as varying speed with higher LBA sector, bad sectors on the disk drive, does not allow calculating exactly the time remaining.

License Agreement

BY RUNNING THIS SOFTWARE, YOU ARE CONSENTING TO BE BOUND BY AND ARE BECOMING A PARTY TO THIS AGREEMENT. IF YOU DO NOT AGREE TO ALL OF THE TERMS OF THIS AGREEMENT, DO NOT EXECUTE IT.

LICENSE GRANT.

Flobo Recovery, grants you a non-exclusive license to use the Software free of charge for evaluation and trial purposes. THIS SOFTWARE CONTAINS CODE THAT DISABLES SOME OF ITS FEATURES. This License does not entitle you to hard-copy documentation, support or telephone assistance.

DISCLAIMER OF WARRANTY.

The Software is provided on an AS IS basis, without warranty of any kind, including without limitation the warranties that the Software is merchantable, fit for a particular purpose or non-infringing. The entire risk as to the quality and performance of the Software is borne by you. Should the Software prove defective in any respect, you and not Flobo Recovery or its suppliers assume the entire cost of any service and repair. In addition, the security mechanisms implemented by the Software have inherent limitations, and you must determine that the Software sufficiently meets your requirements. This disclaimer of warranty constitutes an essential part of the

agreement. No use of the Software is authorized hereunder except under this Disclaimer.

TERMINATION.

The license will terminate automatically if you fail to comply with the limitations described herein. You must destroy all copies of the Software upon termination.

TERMS APPLICABLE WHEN LICENSE FEES PAID:

LICENSE GRANT.

Subject to payment of applicable license fees, Licensor grants to you a non-exclusive license to use the Software and accompanying documentation ("Documentation") in the manner described below under "SCOPE OF LICENSE GRANT".

If any modifications are made to the Software by you during the warranty period; if the media is subjected to accident, abuse, or improper use; or if you violate the terms of this Agreement, then this warranty shall immediately terminate. Moreover, this warranty shall not apply if the Software is used on or in conjunction with hardware or software other than the unmodified version of hardware and software with which the Software was designed to be used as described in the Documentation.

THIS IS A LIMITED WARRANTY, AND IT IS THE ONLY WARRANTY MADE BY LICENSOR OR ITS SUPPLIERS. LICENSOR MAKES NO OTHER WARRANTIES, EXPRESS OR IMPLIED, INCLUDING BUT NOT LIMITED TO WARRANTIES OF MERCHANTABILITY, FITNESS FOR A PARTICULAR PURPOSE, AND NONINFRINGEMENT OF THIRD PARTIES' RIGHTS. YOU MAY HAVE OTHER STATUTORY RIGHTS.

HOWEVER, TO THE FULL EXTENT PERMITTED BY LAW, THE DURATION OF STATUTORILY REQUIRED WARRANTIES, IF ANY, SHALL BE LIMITED TO THE ABOVE LIMITED WARRANTY PERIOD.

MOREOVER, IN NO EVENT WILL WARRANTIES PROVIDED BY LAW, IF ANY, APPLY UNLESS THEY ARE REQUIRED TO APPLY BY STATUTE NOTWITHSTANDING THEIR EXCLUSION BY CONTRACT. NO DEALER, AGENT, OR EMPLOYEE OF LICENSOR IS AUTHORIZED TO MAKE ANY MODIFICATIONS, EXTENSIONS, OR ADDITIONS TO THIS LIMITED WARRANTY. TERMS APPLICABLE TO ALL LICENSE GRANTS SCOPE OF LICENSE GRANT.

You may:

*Use the Software on any single computer;

*Use the Software on a second computer so long as only one (1) copy is used at a time;

*Use the Software on a network, provided that a licensed copy of the Software has been acquired for each person permitted to access the Software through the network;

*Copy the Software for archival purposes, provided any copy must contain all of the original Software's proprietary notices; or

*If you have purchased a Right to Copy license for multiple copies of the Software, make the number of copies of Software (but not the Documentation) stated on the packing slip or invoice, provided any copy must contain all of the original Software's proprietary notices. The number of copies on the invoice is the total number of copies that may be made. Additional copies of Documentation may be purchased from Licensor.

You may not:

*Permit other individuals to use the Software except under the terms listed above;

*Permit concurrent use of the Software;

*Modify, translate, reverse engineer, decompile, disassemble (except and solely to the extent an applicable statute expressly and specifically prohibits such restrictions), or create derivative works based on the Software;

*Copy the Software other than as specified above;

*Rent, lease, grant a security interest in, or otherwise transfer rights to the Software;

*Using Flobo Recovery products with files not belonging to the license owner. It is explicitly prohibited to use the program as means to Remove any proprietary notices or labels on the Software.

TITLE.

Title, ownership rights, and intellectual property rights in the Software shall remain in Flobo Recovery and/or its suppliers. The Software is protected by copyright and other intellectual property laws and by international treaties. Title and related rights in the content accessed through the Software is the property of the applicable content owner and is protected by applicable law. The license granted under this Agreement gives you no rights to such content.

TERMINATION.

This Agreement and the license granted hereunder will terminate automatically if you fail to comply with the limitations described herein. Upon termination, you must destroy all copies of the Software and Documentation.

LIMITATION OF LIABILITY.

UNDER NO CIRCUMSTANCES AND UNDER NO LEGAL THEORY, TORT, CONTRACT, OR OTHERWISE, SHALL LICENSOR OR ITS SUPPLIERS OR RESELLERS BE LIABLE TO YOU OR ANY OTHER PERSON FOR ANY INDIRECT, SPECIAL, INCIDENTAL, OR CONSEQUENTIAL DAMAGES OF ANY CHARACTER INCLUDING,

WITHOUT LIMITATION, DAMAGES FOR LOSS OF GOODWILL, WORK STOPPAGE, COMPUTER FAILURE OR MALFUNCTION, OR ANY AND ALL OTHER COMMERCIAL DAMAGES OR LOSSES.

IN NO EVENT WILL LICENSOR BE LIABLE FOR ANY DAMAGES IN EXCESS OF THE AMOUNT LICENSOR RECEIVED FROM YOU FOR A LICENSE TO THE SOFTWARE, EVEN IF LICENSOR SHALL HAVE BEEN INFORMED OF THE POSSIBILITY OF SUCH DAMAGES, OR FOR ANY CLAIM BY ANY THIRD PARTY. THIS LIMITATION OF LIABILITY SHALL NOT APPLY TO LIABILITY FOR DEATH OR PERSONAL INJURY RESULTING FROM LICENSOR'S NEGLIGENCE TO THE EXTENT APPLICABLE LAW PROHIBITS SUCH LIMITATION. SOME JURISDICTIONS DO NOT ALLOW THE EXCLUSION OR LIMITATION OF INCIDENTAL OR CONSEQUENTIAL DAMAGES, SO THIS EXCLUSION AND LIMITATION MAY NOT APPLY TO YOU.

HIGH RISK ACTIVITIES.

The Software is not fault-tolerant and is not designed, manufactured or intended for use or resale as on-line control equipment in hazardous environments requiring fail-safe performance, such as in the operation of nuclear facilities, aircraft navigation or communication systems, air traffic control, direct life support machines, or weapons systems, in which the failure of the Software could lead directly to death, personal injury, or severe physical or environmental damage ("High Risk Activities"). Accordingly, Licensor and its suppliers specifically disclaim any express or implied warranty of fitness for High Risk Activities.

MISCELLANEOUS. This Agreement represents the complete agreement concerning the license granted hereunder and may be amended only by a writing executed by both parties. THE ACCEPTANCE OF ANY PURCHASE ORDER PLACED BY YOU IS EXPRESSLY MADE CONDITIONAL ON YOUR ASSENT TO THE TERMS SET FORTH HEREIN, AND NOT THOSE IN YOUR PURCHASE ORDER. If any provision of this Agreement is held to be unenforceable, such provision shall be reformed only to the extent necessary to make enforceable.